

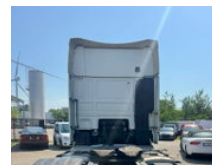
TLD TRUCKS & VANS

Import - Export

DAF XF 106.460 **EURO 6-INTARDER-BELGIAN ORIGINE**

General characteristics

Brand	DAF
Model	XF 106.460
Subcategory	Cab over engine
Meter reading	867.056km
Year of construction	2015
Date of first registration	16-09-2015
Colour	Wit
Condition	Used
General state	Very good
Fuel	Diesel
Emission class	Euro 6
Reference	5152



Properties

Single weight	7.775kg
GVW	18.999kg
Cabin	Sleeping cabin

Serial number

XLRTEH4300G079760

Cylinder capacity

12.902cc

DAF XF 106.460 **EURO 6-INTARDER-BELGIAN ORIGINE**

Technical specifications

Transmission	Automatic
--------------	-----------

Assets	340kw
--------	-------

Description

BELGIAN TRUCK

Accessories