

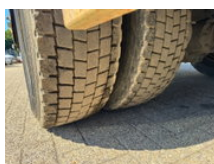
TLD TRUCKS & VANS

Import - Export

Mercedes-Benz 1317 **FULL STEEL SUSPENION-WINCH**

General characteristics

Brand	Mercedes-Benz
Model	1317
Subcategory	Loading ramp
Meter reading	723.290km
Year of construction	1998
Date of first registration	15-07-1998
Colour	Wit
Condition	Used
General state	Very good
Fuel	Diesel
Reference	5065



Properties

Single weight 6.000kg

Load capacity	7.000kg
GVW	13.000kg
Length	820cm
Cabin	Nee
Serial number	WDB6763371K311846

Mercedes-Benz 1317 **FULL STEEL SUSPENION-WINCH**

Technical specifications

Number of axes	2
Axis configuration	4x2
Transmission	Manual transmission

Description

FRENCH TRUCK FULL STEEL SUSPENSION

Accessories