

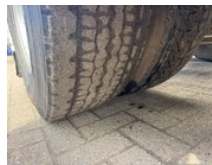
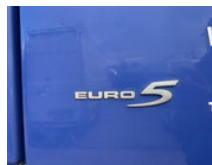
TLD TRUCKS & VANS

Import - Export

Volvo FM 300 **EURO 5-BELGIAN TRUCK

General characteristics

Brand	Volvo
Model	FM 300
Subcategory	Cab over engine
Meter reading	851.921km
Year of construction	2007
Date of first registration	18-07-2007
Colour	Blue
Condition	Used
General state	Very good
Fuel	Diesel
Emission class	Euro 5
Reference	5008



Properties

Single weight	6.880kg
GVW	19.000kg
Cabin	Sleeping cabin

Serial number

YV2JL40A87B479316

Cylinder capacity

9.365cc

Volvo FM 300 **EURO 5-BELGIAN TRUCK

Technical specifications

Number of axes	2
Axis configuration	4x2
Transmission	Semi-automatic
Assets	226kw

Description

BELGIAN TRUCK DRIVES PERFECT I SHIFT GEARBOX SPOILERS

Accessories